

**AGENDA
PLANNING & ZONING**

**The Village of East Dundee
August 18, 2014
6:00 PM**

**Village Hall Annex
120 Barrington Ave.
East Dundee, IL 60118**

CALL TO ORDER

ROLL CALL / DECLARATION OF QUORUM

APPROVAL OF MINUTES

PUBLIC COMMENT

NEW BUSINESS

- 1. Site Plan: Lot 4- Terra Business Park (Palumbo)**

HISTORIC COMMISSION

ADJOURNMENT

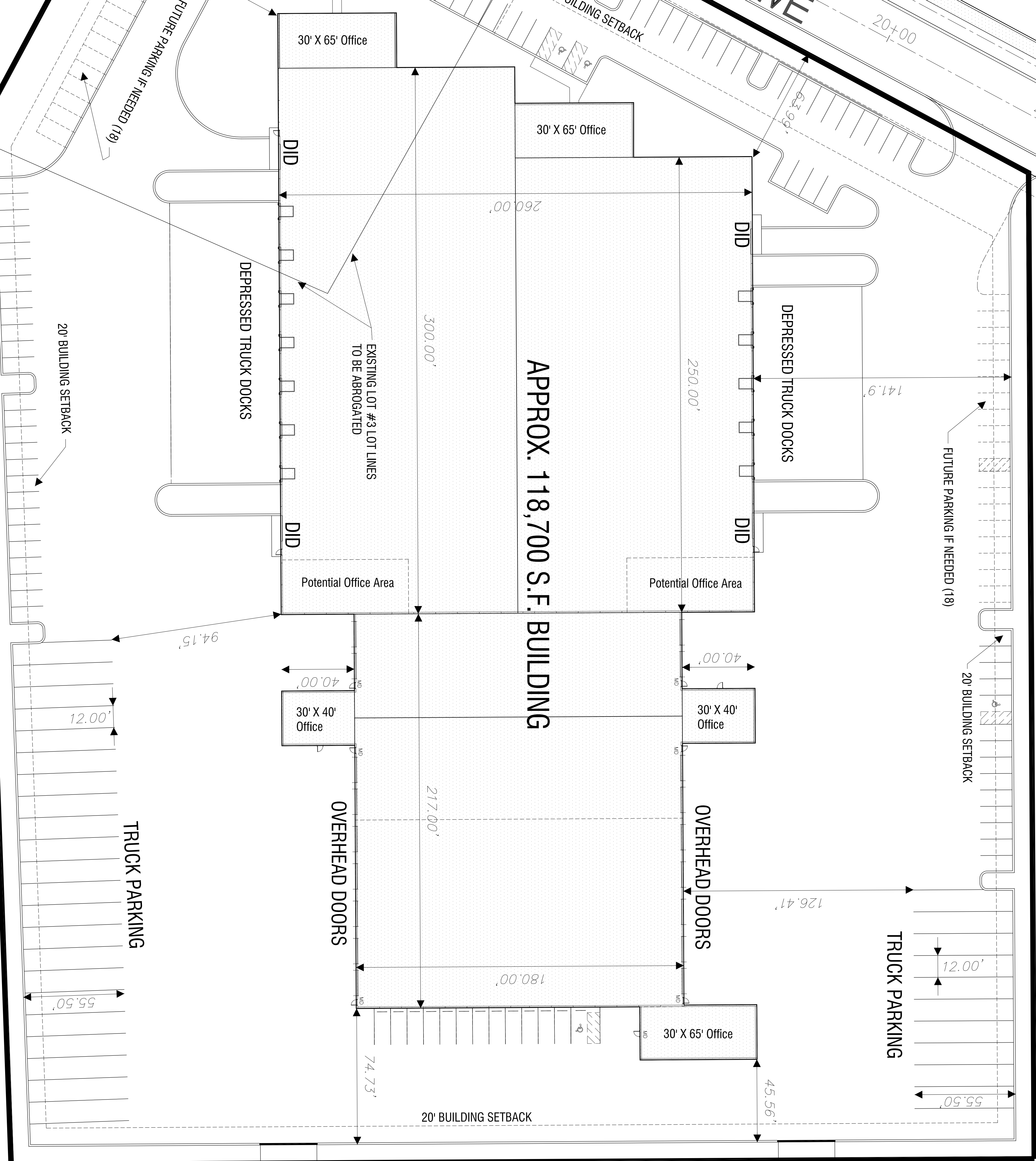


LOT 3 **LOT 5**

CHRISTINA DRIVE

17+00 18+00 19+00 20+00 21+00

10' PARKING LOT SETBACK
40' BUILDING SETBACK



POTENTIAL LOCATION OF 37' WIDE ACCESS ROAD WITHIN 66' RIGHT-OF-WAY
NOT REQUIRED AS PART OF THIS PROJECT

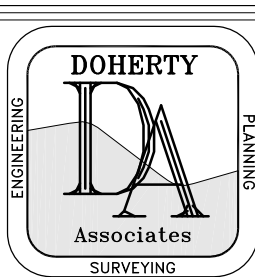
PROJECT DATA
 Lot Area = 8.77 acres
 Building Area
 Office area = 8,250 s.f.
 Warehouse/Service area = 110,450 s.f.
 Total Area = 118,700 s.f.
 Required Parking
 Office (1/250 s.f.): 33 spaces
 Warehouse/Service = (1/1000 s.f.) = 111 spaces
 Total Parking required = 144 spaces
 Parking Provided
 Standard: 102 spaces
 Standard (Banked): 36 spaces
 Handicapped: 6 spaces
 Total: 144 spaces

ACCESS TO TRUCK PARKING

ACCESS TO TRUCK PARKING

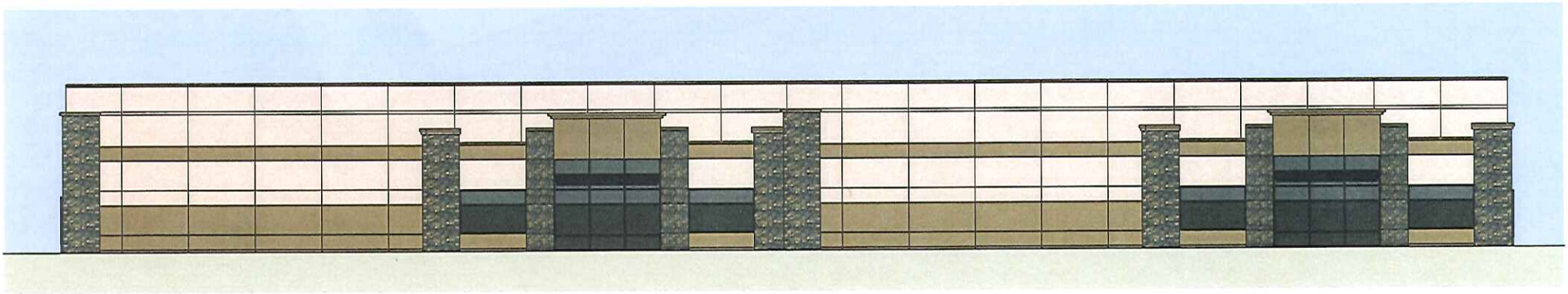
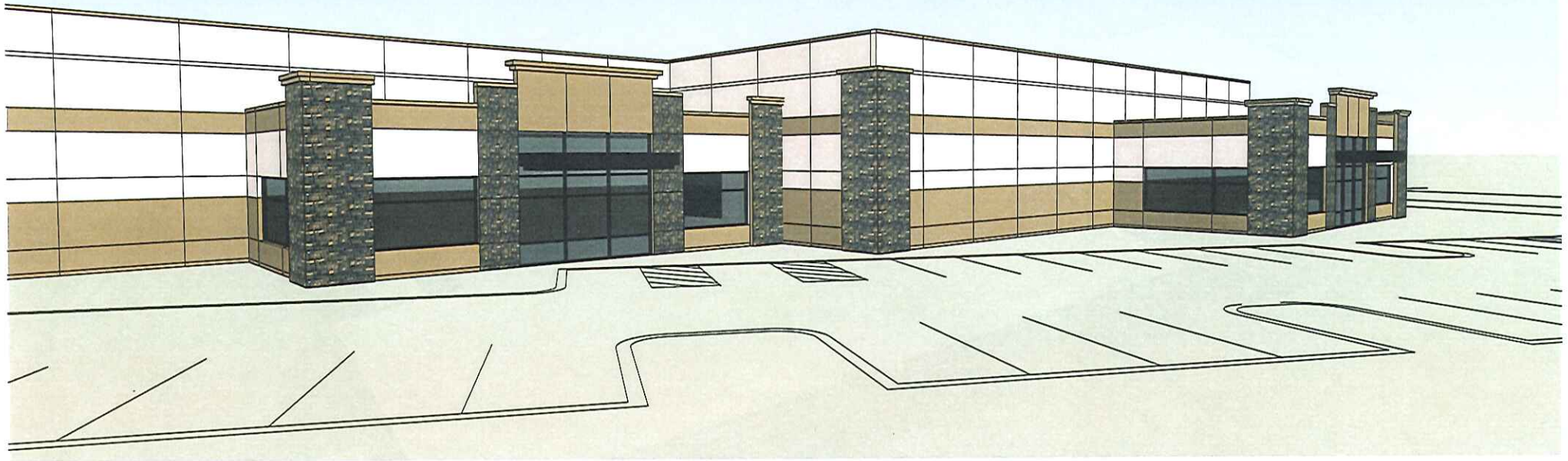
TERRA BUSINESS PARK LOT 4
East Dundee, Illinois
SITE PLAN

DOHERTY & ASSOCIATES
 1424 Cabot Lane (847) 352-5760
 Schaumburg, IL 60193 FAX (847) 352-5679
 ENGINEERS SURVEYORS PLANNERS
 LANDSCAPE ARCHITECTS



REV. NO.	DESCRIPTION	DATE

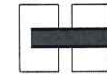
SCALE: 1" = 30'
 DESIGNED BY: JPD
 DRAWN BY: JPD
 CHECKED BY: JPD
 APPROVED BY: JPD
 DATE: 8-7-14
 JOB NO.: 28011
 DRAWING NO.: 10f1



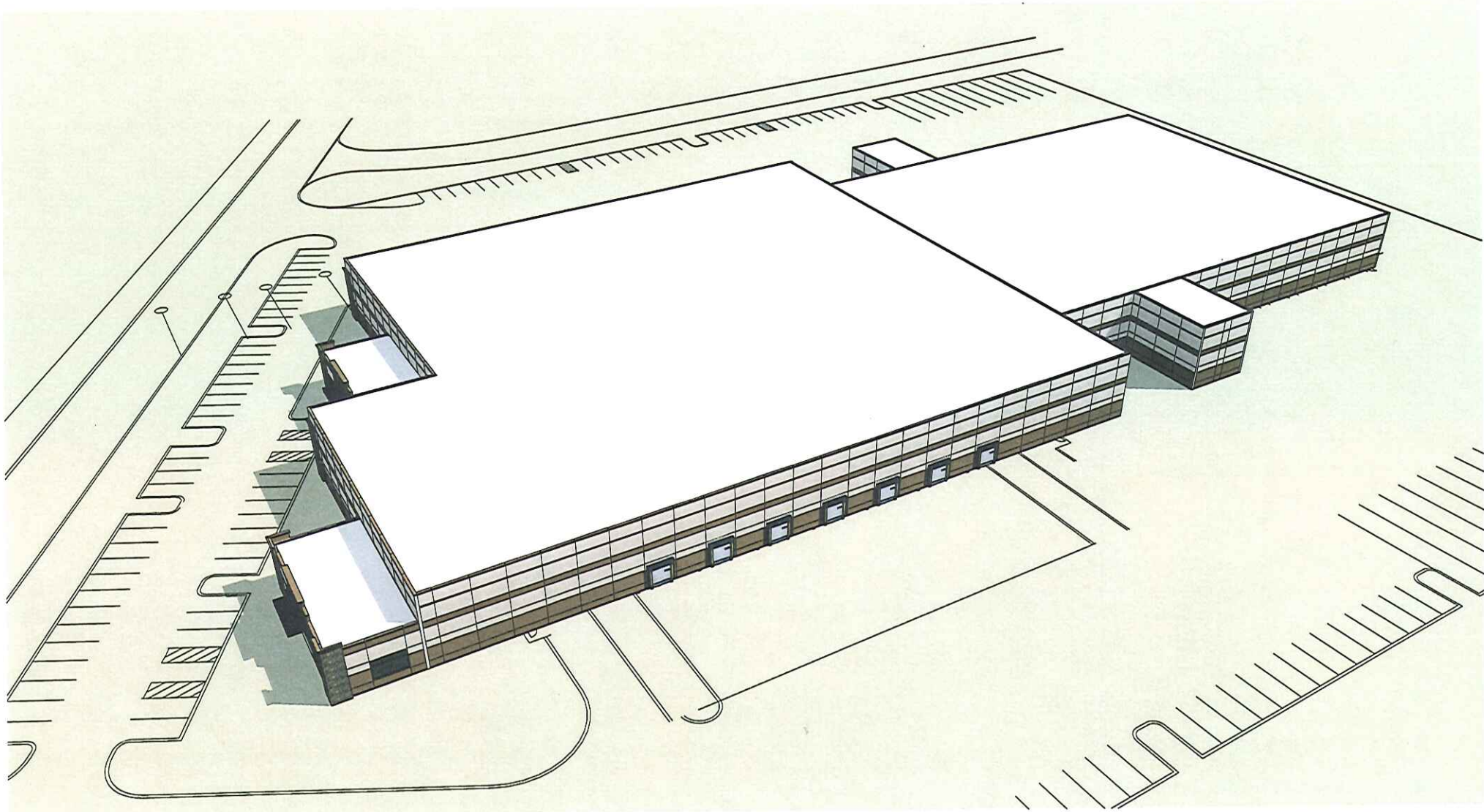
Conceptual Designs | - | 08-08-2014 | KSK | 1

PROPOSED CONCEPTUAL DESIGNS:
Terra Business Park - Building 2

East Dundee, Illinois



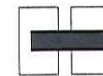
HARRIS ARCHITECTS, INC.
WWW.HARRISARCHITECTS.COM 847.303.1155



Conceptual Designs | - | 08-08-2014 | KSK | 3

PROPOSED CONCEPTUAL DESIGNS:
Terra Business Park - Building 2

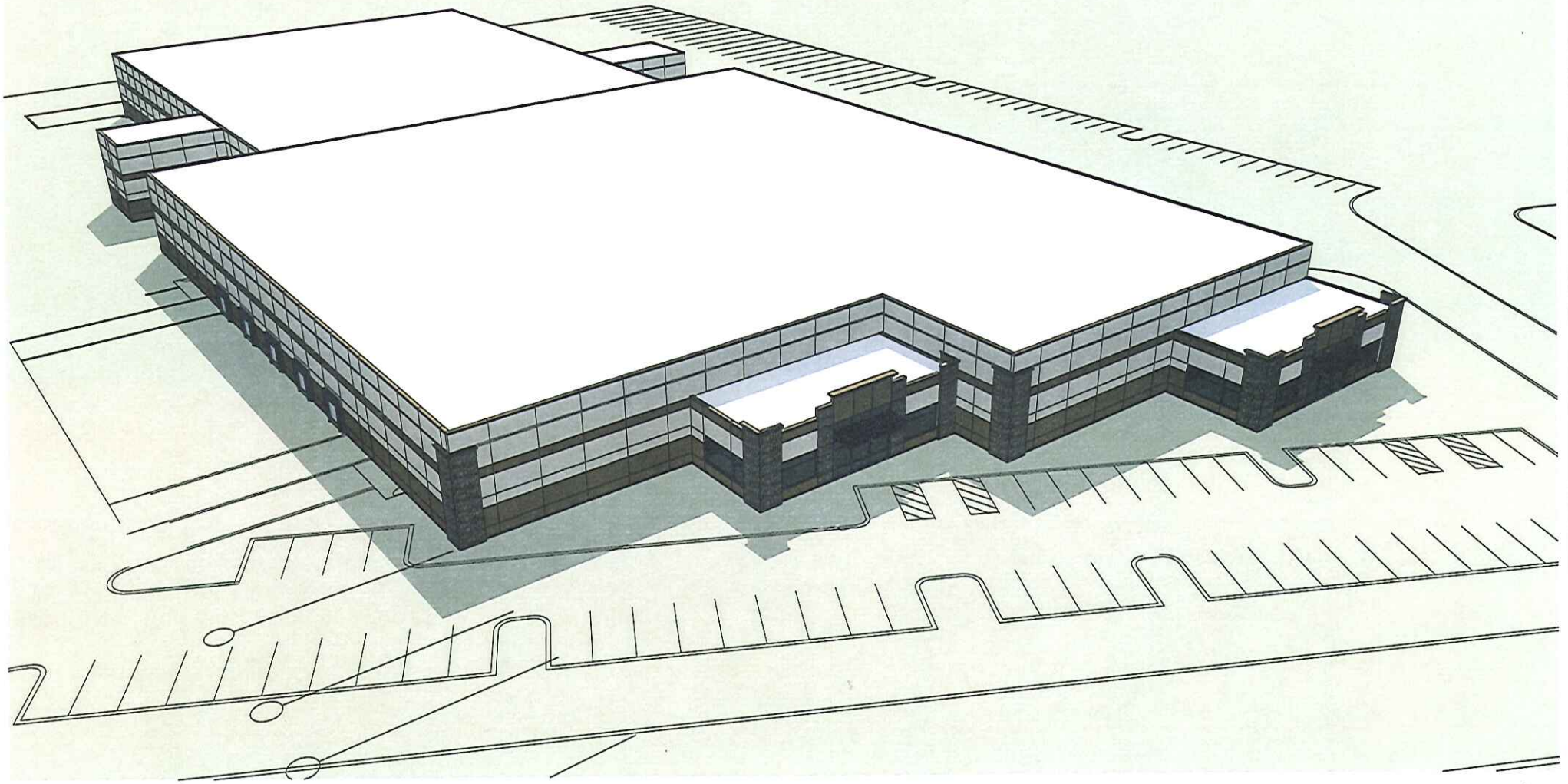
East Dundee, Illinois



HARRIS ARCHITECTS, INC.

WWW.HARRISARCHITECTS.COM

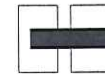
847.303.1155



Conceptual Designs | - | 08-08-2014 | KSK | 2

PROPOSED CONCEPTUAL DESIGNS:
Terra Business Park - Building 2

East Dundee, Illinois



HARRIS ARCHITECTS, INC.

WWW.HARRISARCHITECTS.COM

847.303.1155